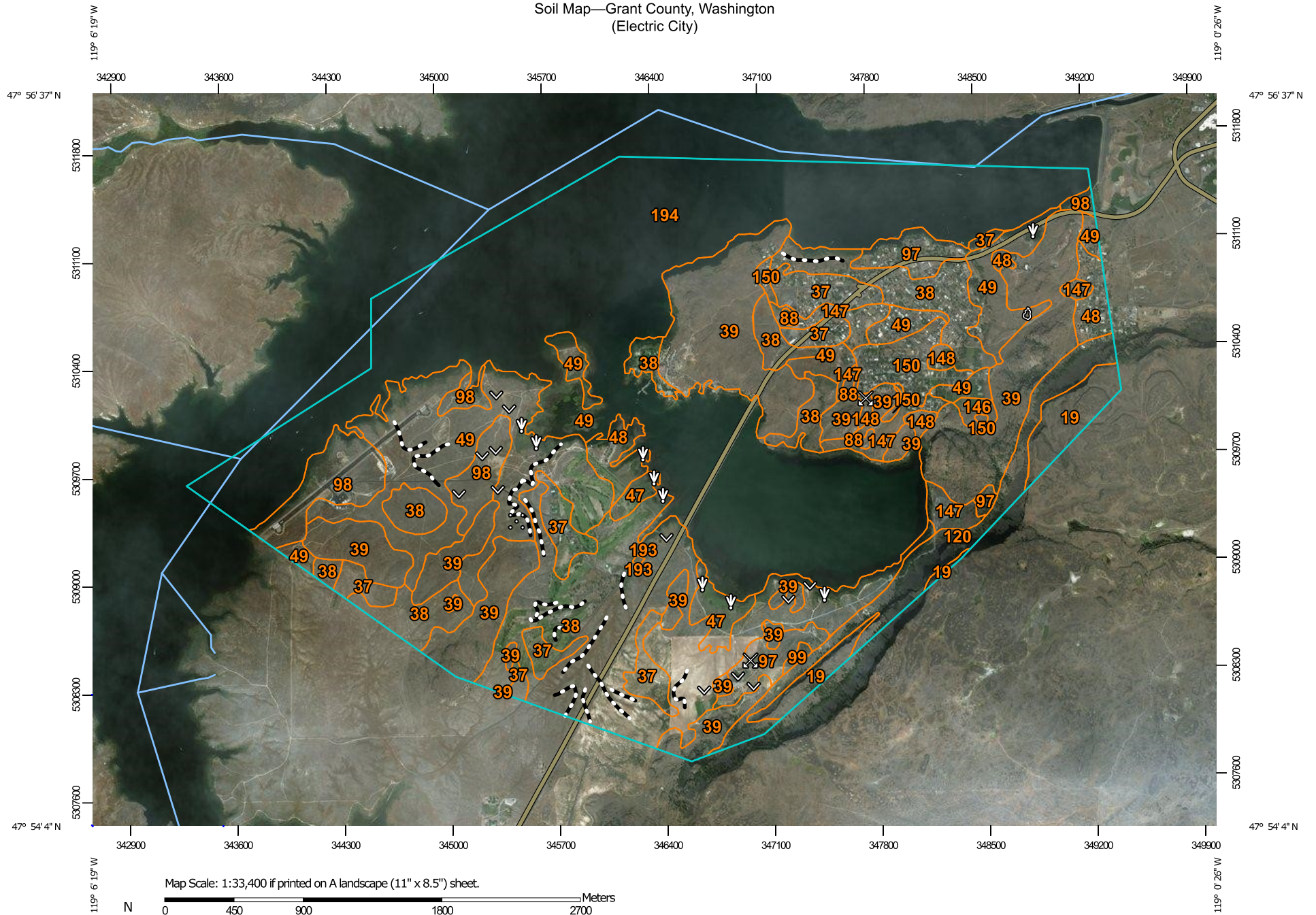
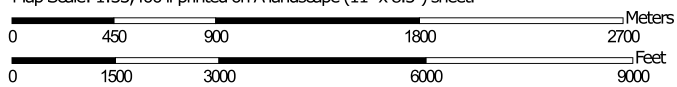


Soil Map—Grant County, Washington (Electric City)



Map Scale: 1:33,400 if printed on A landscape (11" x 8.5") sheet.



Map projection: Web Mercator Corner coordinates: WGS84 Edge tics: UTM Zone 11N WGS84




**Natural Resources
Conservation Service**

Web Soil Survey
National Cooperative Soil Survey

6/24/2019
Page 1 of 3

MAP LEGEND

Area of Interest (AOI)

 Area of Interest (AOI)

Soils

 Soil Map Unit Polygons

 Soil Map Unit Lines

 Soil Map Unit Points

Special Point Features



Blowout



Borrow Pit



Clay Spot



Closed Depression



Gravel Pit



Gravelly Spot



Landfill



Lava Flow



Marsh or swamp



Mine or Quarry



Miscellaneous Water



Perennial Water



Rock Outcrop



Saline Spot



Sandy Spot



Severely Eroded Spot



Sinkhole



Slide or Slip



Sodic Spot



Spoil Area



Stony Spot



Very Stony Spot



Wet Spot



Other



Special Line Features

Water Features



Streams and Canals

Transportation



Rails



Interstate Highways



US Routes



Major Roads



Local Roads

Background



Aerial Photography

MAP INFORMATION

The soil surveys that comprise your AOI were mapped at 1:24,000.

Please rely on the bar scale on each map sheet for map measurements.

Source of Map: Natural Resources Conservation Service

Web Soil Survey URL:

Coordinate System: Web Mercator (EPSG:3857)

Maps from the Web Soil Survey are based on the Web Mercator projection, which preserves direction and shape but distorts distance and area. A projection that preserves area, such as the Albers equal-area conic projection, should be used if more accurate calculations of distance or area are required.

This product is generated from the USDA-NRCS certified data as of the version date(s) listed below.

Soil Survey Area: Grant County, Washington

Survey Area Data: Version 12, Sep 10, 2018

Soil map units are labeled (as space allows) for map scales 1:50,000 or larger.

Date(s) aerial images were photographed: Jun 28, 2014—Sep 20, 2016

The orthophoto or other base map on which the soil lines were compiled and digitized probably differs from the background imagery displayed on these maps. As a result, some minor shifting of map unit boundaries may be evident.

Map Unit Legend

Map Unit Symbol	Map Unit Name	Acres in AOI	Percent of AOI
19	Bakeoven-Anders complex, 0 to 15 percent slopes	77.8	2.0%
37	Ellisforde silt loam, 0 to 5 percent slopes	142.8	3.8%
38	Ellisforde silt loam, 5 to 15 percent slopes	635.2	16.7%
39	Entiat-Rock outcrop complex, 25 to 65 percent slopes	585.0	15.4%
47	Esquatzel silt loam	39.0	1.0%
48	Farrell very fine sandy loam, 0 to 5 percent slopes	59.1	1.6%
49	Farrell very fine sandy loam, 5 to 10 percent slopes	405.9	10.7%
88	Pits	6.2	0.2%
97	Quincy fine sand, 2 to 15 percent slopes	73.9	1.9%
98	Quincy loamy fine sand, 0 to 15 percent slopes	122.5	3.2%
99	Quincy loamy fine sand, 15 to 35 percent slopes	3.8	0.1%
120	Rubble land-Rock outcrop complex	123.2	3.2%
146	Strat gravelly loam, 0 to 15 percent slopes	10.3	0.3%
147	Strat cobbly loam, 0 to 15 percent slopes	67.8	1.8%
148	Strat stony loam, 0 to 25 percent slopes	15.6	0.4%
150	Stratford loam, 0 to 5 percent slopes	59.9	1.6%
193	Miscellaneous Water	1.2	0.0%
194	Water	1,372.7	36.1%
Totals for Area of Interest		3,802.3	100.0%