



WASHINGTON DEPARTMENT OF FISH AND WILDLIFE PRIORITY HABITATS AND SPECIES REPORT

SOURCE DATASET: PHSPlusPublic
REPORT DATE: 06/24/2019 3.53

Query ID: P190624155254

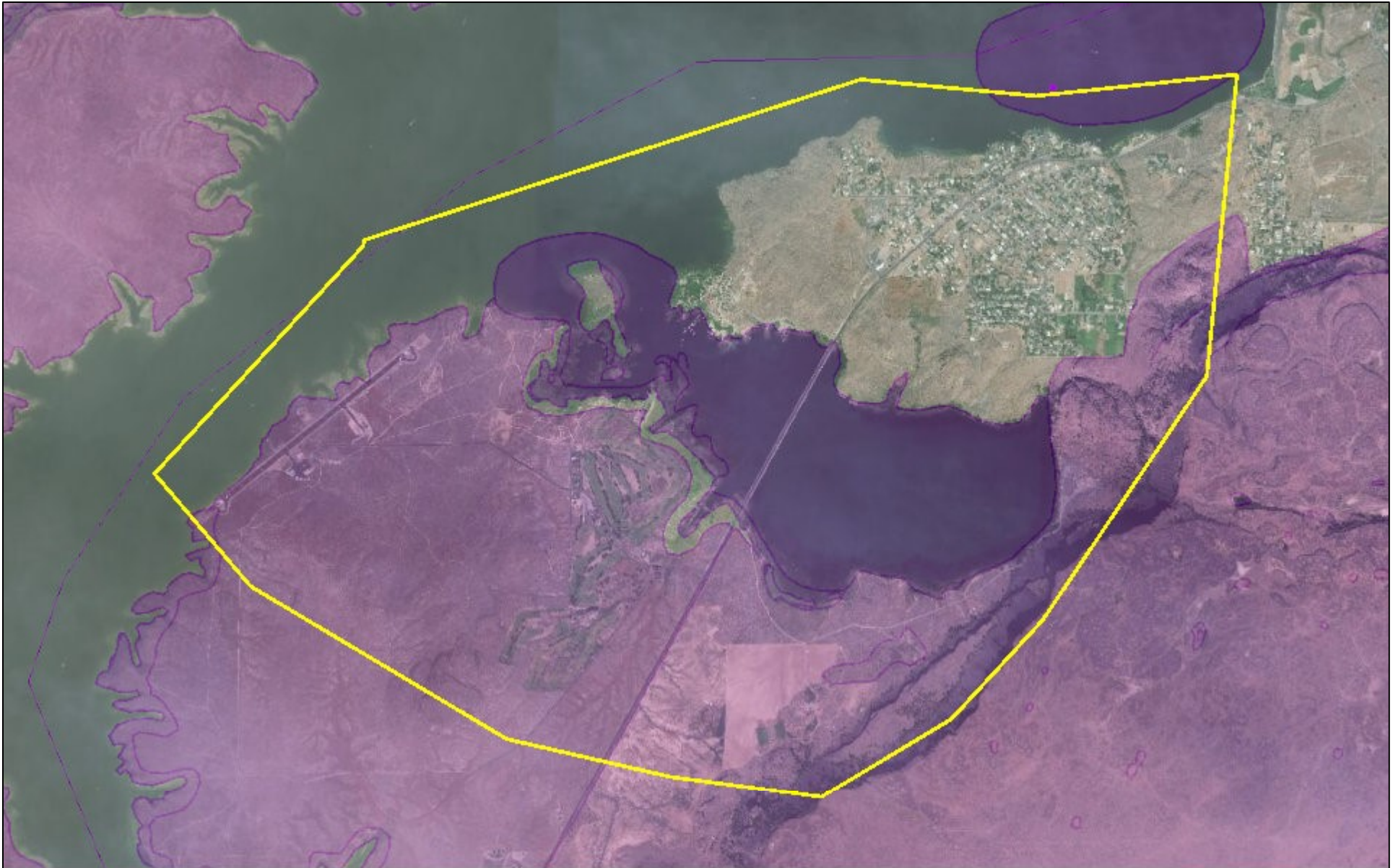
Common Name	Site Name	Priority Area	Accuracy	Federal Status	Sensitive Data	Source Entity
Scientific Name	Source Dataset	Occurrence Type		State Status	Resolution	Geometry Type
Notes	Source Record	More Information (URL)		PHS Listing Status		
	Source Date	Mgmt Recommendations				
Cliffs/bluffs	BANKS LAKE CLIFFS PHSREGION 904686	Habitat Feature N/A N/A	1/4 mile (Quarter)	N/A N/A PHS LISTED	N AS MAPPED	WA Dept. of Fish and Wildlife Polygons
Freshwater Emergent	N/A NWIWetlands	Aquatic Habitat Aquatic habitat http://www.ecy.wa.gov	NA	N/A N/A PHS Listed	N AS MAPPED	US Fish and Wildlife Service Polygons
Freshwater Emergent	N/A NWIWetlands	Aquatic Habitat Aquatic habitat http://www.ecy.wa.gov	NA	N/A N/A PHS Listed	N AS MAPPED	US Fish and Wildlife Service Polygons
Freshwater Emergent	N/A NWIWetlands	Aquatic Habitat Aquatic habitat http://www.ecy.wa.gov	NA	N/A N/A PHS Listed	N AS MAPPED	US Fish and Wildlife Service Polygons
Freshwater Emergent	N/A NWIWetlands	Aquatic Habitat Aquatic habitat http://www.ecy.wa.gov	NA	N/A N/A PHS Listed	N AS MAPPED	US Fish and Wildlife Service Polygons
Freshwater Emergent	N/A NWIWetlands	Aquatic Habitat Aquatic habitat http://www.ecy.wa.gov	NA	N/A N/A PHS Listed	N AS MAPPED	US Fish and Wildlife Service Polygons
Freshwater Emergent	N/A NWIWetlands	Aquatic Habitat Aquatic habitat http://www.ecy.wa.gov	NA	N/A N/A PHS Listed	N AS MAPPED	US Fish and Wildlife Service Polygons

Common Name Scientific Name Notes	Site Name Source Dataset Source Record Source Date	Priority Area Occurrence Type More Information (URL) Mgmt Recommendations	Accuracy	Federal Status State Status PHS Listing Status	Sensitive Data Resolution	Source Entity Geometry Type
Freshwater Emergent	N/A NWIWetlands	Aquatic Habitat Aquatic habitat http://www.ecy.wa.gov	NA	N/A N/A PHS Listed	N AS MAPPED	US Fish and Wildlife Service Polygons
Freshwater Emergent	N/A NWIWetlands	Aquatic Habitat Aquatic habitat http://www.ecy.wa.gov	NA	N/A N/A PHS Listed	N AS MAPPED	US Fish and Wildlife Service Polygons
Golden eagle Aquila chrysaetos	WS_OccurPoint 54240 June 08, 2005	Breeding Area Nest http://wdfw.wa.gov/publications/pub.php?	1/4 mile (Quarter)	N/A Candidate PHS LISTED	Y TOWNSHIP	WA Dept. of Fish and Wildlife Points
Golden eagle Aquila chrysaetos	WS_OccurPoint 54239 April 07, 2014	Breeding Area Nest http://wdfw.wa.gov/publications/pub.php?	1/4 mile (Quarter)	N/A Candidate PHS LISTED	Y TOWNSHIP	WA Dept. of Fish and Wildlife Points
Greater Sage-grouse Centrocercus urophasianus	BANKS LAKE AND MOSES PHSREGION 904940	Regular Concentration Regular concentration http://wdfw.wa.gov/publications/pub.php?	1/4 mile (Quarter)	Fed Spp Concern Threatened PHS LISTED	N AS MAPPED	WA Dept. of Fish and Wildlife Polygons
Inland Sand Dunes	ELECTRIC CITY EAST PHSREGION 920036	Terrestrial Habitat N/A N/A	1/4 mile (Quarter)	N/A N/A PHS LISTED	N AS MAPPED	WA Dept. of Fish and Wildlife Polygons
Inland Sand Dunes	ELECTRIC CITY WEST PHSREGION 920035	Terrestrial Habitat N/A N/A	1/4 mile (Quarter)	N/A N/A PHS LISTED	N AS MAPPED	WA Dept. of Fish and Wildlife Polygons
Kokanee Oncorhynchus nerka	Upper Grand Coulee SWIFD 2464	Occurrence/Migration Occurrence/migration http://wdfw.wa.gov/wlm/diversty/soc/soc.htm http://wdfw.wa.gov/publications/pub.php?	NA	N/A N/A PHS LISTED	N AS MAPPED	Lines








Common Name Scientific Name Notes	Site Name Source Dataset Source Record Source Date	Priority Area Occurrence Type More Information (URL) Mgmt Recommendations	Accuracy	Federal Status State Status PHS Listing Status	Sensitive Data Resolution	Source Entity Geometry Type
Mule deer Odocoileus hemionus	LINCOLN-SPOKANE MULE PHSREGION 920012	Regular Concentration Regular concentration http://wdfw.wa.gov/publications/pub.php?	1/4 mile (Quarter)	N/A N/A PHS LISTED	N AS MAPPED	WA Dept. of Fish and Wildlife Polygons
Rainbow Trout Oncorhynchus mykiss	Upper Grand Coulee SWIFD 2468	Occurrence/Migration Occurrence/migration http://wdfw.wa.gov/wlm/diversty/soc/soc.htm http://wdfw.wa.gov/publications/pub.php?	NA	N/A N/A PHS LISTED	N AS MAPPED	Lines
Waterfowl Concentrations	DEVILS PUNCH BOWL PHSREGION 904699	Breeding Area Breeding occurrence http://wdfw.wa.gov/publications/pub.php?	1/4 mile (Quarter)	N/A N/A PHS LISTED	N AS MAPPED	WA Dept. of Fish and Wildlife Polygons
Waterfowl Concentrations	OSBORN BAY-ELECTRIC PHSREGION 904870	Regular Concentration Regular concentration http://wdfw.wa.gov/publications/pub.php?	1/4 mile (Quarter)	N/A N/A PHS LISTED	N AS MAPPED	WA Dept. of Fish and Wildlife Polygons
Western grebe Aechmophorus occidentalis	OSBORNE BAY WS_OccurPolygon 4349 July 08, 2011	Breeding Area Colony http://wdfw.wa.gov/publications/pub.php?	GPS	N/A Candidate PHS LISTED	N AS MAPPED	WA Dept. of Fish and Wildlife Polygons
Wetlands	OSBORN BAY PHSREGION 904868	Aquatic Habitat N/A http://www.ecy.wa	1/4 mile (Quarter)	N/A N/A PHS LISTED	N AS MAPPED	WA Dept. of Fish and Wildlife Polygons

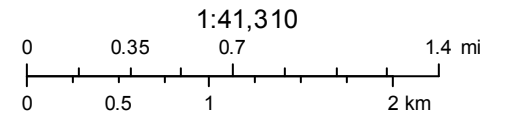
DISCLAIMER. This report includes information that the Washington Department of Fish and Wildlife (WDFW) maintains in a central computer database. It is not an attempt to provide you with an official agency response as to the impacts of your project on fish and wildlife. This information only documents the location of fish and wildlife resources to the best of our knowledge. It is not a complete inventory and it is important to note that fish and wildlife resources may occur in areas not currently known to WDFW biologists, or in areas for which comprehensive surveys have not been conducted. Site specific surveys are frequently necessary to rule out the presence of priority resources. Locations of fish and wildlife resources are subject to variation caused by disturbance, changes in season and weather, and other factors. WDFW does not recommend using reports more than six months old.

WDFW Test Map



June 24, 2019

- | | | | | | |
|---|----------------------|---|---|---|----------|
|  | PHS Report Clip Area | POLY |  | QTR-TWP | |
|  | PT |  | AS MAPPED |  | TOWNSHIP |
|  | LN |  | SECTION | | |



Source: Esri, DigitalGlobe, GeoEye, Earthstar Geographics, CNES/Airbus DS, USDA, USGS, AeroGRID, IGN, and the GIS User Community